



# 2021 WATER & SEWER RATE STUDY

**GOSLING CZUBAK  
ENGINEERING SCIENCES, INC.**  
[WWW.GOSLINGCZUBAK.COM](http://WWW.GOSLINGCZUBAK.COM)



PREPARED BY



**Gosling Czubak**  
engineering sciences, inc.





# Table of Contents

<b>01</b>	<b>INTRODUCTION</b>	<b>1</b>
<b>02</b>	<b>UTILITY RATE OVERVIEW</b>	<b>2</b>
<b>03</b>	<b>WATER BASE RATES</b> SORTED BY COMMUNITY NAME SORTED BY NUMBER OF CUSTOMERS SORTED BY TYPICAL MONTHLY BILL	<b>5</b>
<b>04</b>	<b>SEWER BASE RATES</b> SORTED BY COMMUNITY NAME SORTED BY NUMBER OF CUSTOMERS SORTED BY TYPICAL MONTHLY BILL	<b>14</b>
<b>05</b>	<b>GLOSSARY</b>	<b>23</b>
<b>06</b>	<b>ABOUT GOSLING CZUBAK</b>	<b>24</b>



## Introduction

**GOSLING CZUBAK ENGINEERING SCIENCES, INC.** has compiled this summary based on water and sewer rates provided by nearly 60 communities in Michigan's northern lower and eastern upper peninsulas. The purpose of this summary is to provide communities with a tool for comparing regional water and sewer rates. It is our hope that this summary will assist communities as they evaluate their existing rate structures, plan for future growth, and ultimately provide better service to their customers. This summary is the ninth edition and updates the 2017 edition.

We wish to thank all of the community representatives for the information contained in this summary. Without their help, we could not have compiled and published the information. If you discover an error in the published rates for your community, please notify us at [info@goslingczubak.com](mailto:info@goslingczubak.com) so we can correct it in subsequent printings.

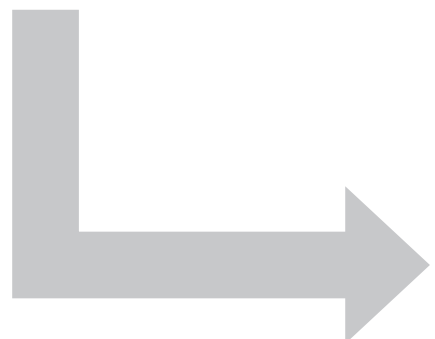
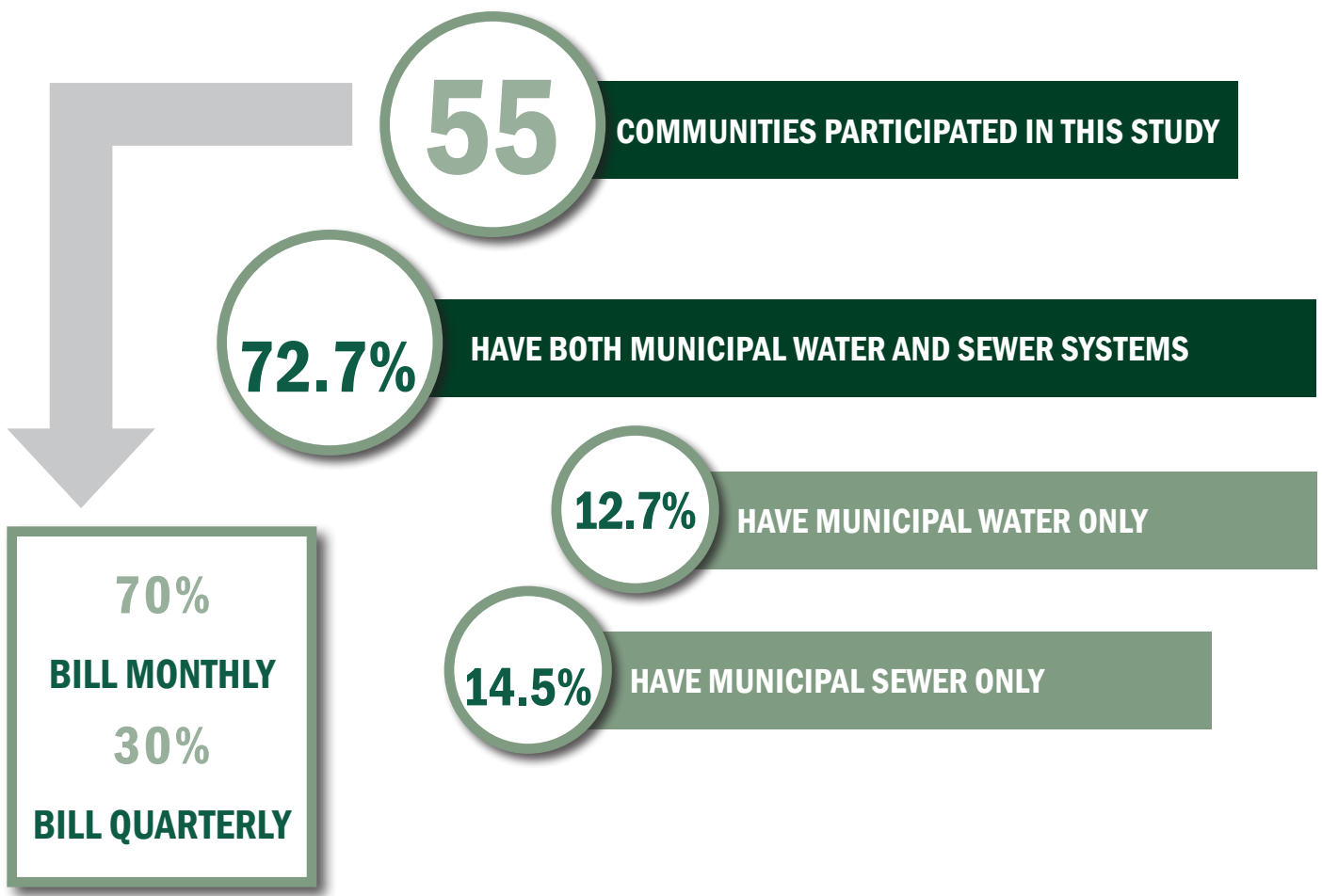
Some of the water and sewer rates contained in the tables may appear different from those that some communities are accustomed to seeing. All of the rates presented in the following tables are based on monthly rates and volume charges per 1,000 gallons. For communities who do not bill on a monthly cycle, the rates presented have been adjusted to reflect average monthly rates. For communities who bill in cubic feet, rather than gallons, the volumes included with the ready-to-serve charge and the consumption charges have been adjusted to gallon equivalents. With these adjustments, direct comparisons in rates can be made among communities.

**ON AVERAGE, COMMUNITIES  
UPDATE RATES EVERY 3 TO 5  
YEARS.**

**WOULD YOUR COMMUNITY  
BENEFIT FROM A UTILITY  
RATE STUDY?**

**CONTACT US AT 231-946-9191.**

Fast Facts



**71.6%**

OF COMMUNITIES  
HAVE UPDATED THEIR  
MUNICIPAL RATES WITHIN  
THE LAST 5 YEARS.

HAS YOUR COMMUNITY?

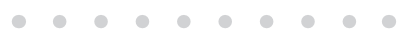
**CONTACT US TO  
COMPLETE A UTILITY  
RATE REVIEW.**

*Fast Facts*

HOW COMMUNITIES BILL	WATER	SEWER
BILL READY-TO-SERVE + USAGE (VS. FLAT RATE)	80%	70%
READY-TO-SERVE BASED ON		
METER SIZE	53%	62%
PER CUSTOMER	31%	29%
PER REU	16%	9%
CARRY OUTSTANDING DEBT	73%	79%
INCLUDE ANNUAL RATE ESCALATOR	30%	27%
AVERAGE BILL FOR CUSTOMER USING 4,500 GALLONS/MONTH	\$32.05	\$41.70

**28.5%**

OF COMMUNITIES AUTOMATICALLY INCREASE THEIR RATES ANNUALLY.



THE AVERAGE RATE OF INCREASE IS BETWEEN

**2 & 4%**

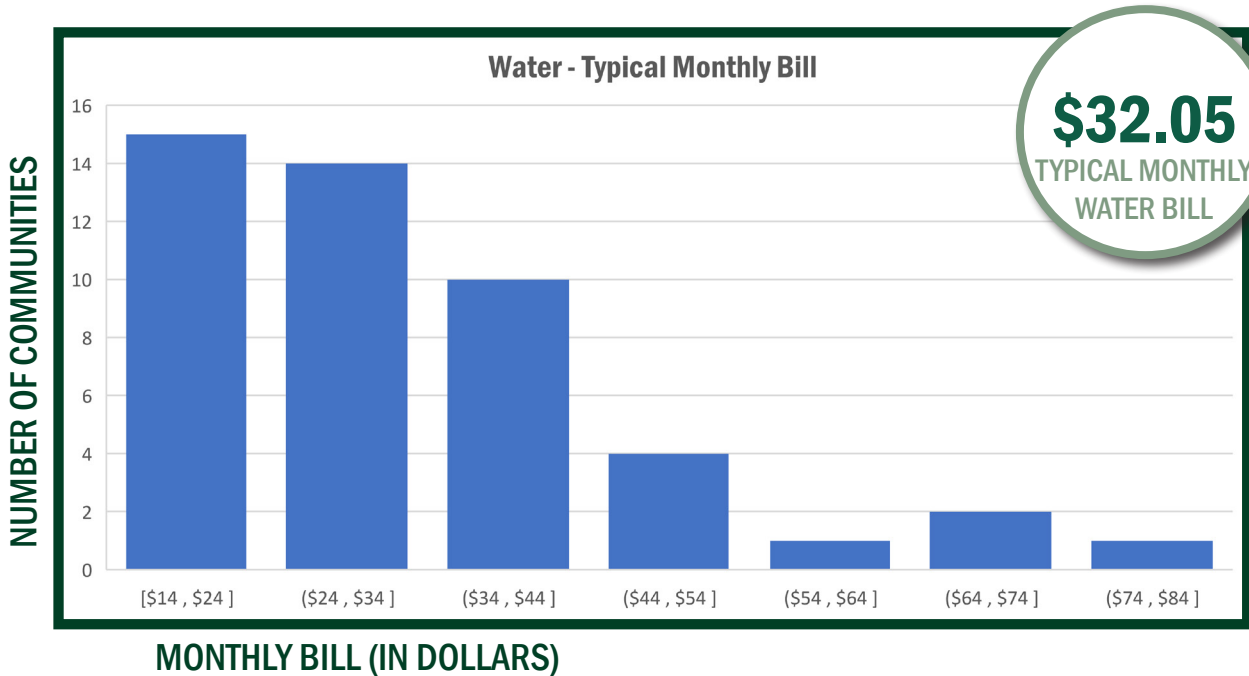
**33%** CHARGE A "COST ONLY" OR "TAP IN" CONNECTION FEE

**67%** CHARGE A "COST RECOVERY" CONNECTION FEE

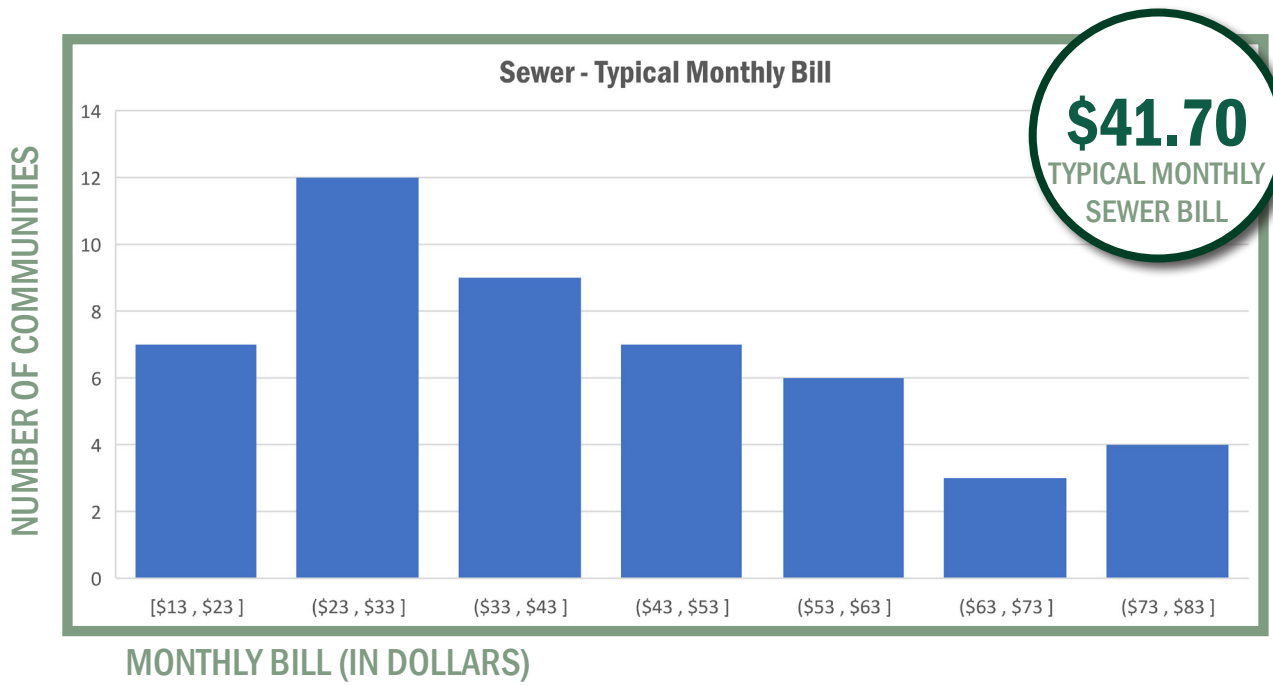
**?** WHAT IS THE DIFFERENCE? CONTACT US TO LEARN MORE.

Fast Facts

TYPICAL MONTHLY BILL ASSUMES 4,500 GALLONS PER MONTH



MONTHLY BILL (IN DOLLARS)



MONTHLY BILL (IN DOLLARS)



*Sorted by Community Name*

COMMUNITY	MONTHLY READY- TO-SERVE CHARGE	READY- TO-SERVE INCLUDED USE (GAL.)	CONSUMPTION CHARGE PER 1,000 GAL.	APPROX. NO. OF CUSTOMERS	MONTHLY BILL (BASED ON 4,500 GAL USAGE)
Baldwin Township	\$16.05	0	\$7.00	400	\$47.55
Baldwin, Village of	\$46.39	0	\$1.16	400	\$51.61
Bear Lake, Village of	\$40.00	0	\$0.00	200	\$40.00
Beulah, Village of	\$31.43	333	\$8.80	367	\$68.09
Big Creek/ Mentor Utility Authority	\$10.00	0	\$2.75	250	\$22.38
Blair Township	\$21.25	0	\$3.20	1,300	\$35.65
Boyne City, City of	\$10.92	0	\$2.86	1,600	\$23.79
Buckley, Village of	\$22.50	0	\$3.50	237	\$38.25
Cadillac, City of	\$7.78	0	\$2.18	3,550	\$17.59
Charlevoix, City of	\$28.00	2,000	\$4.35	3,000	\$38.88
Clare, City of	\$16.06	0	\$3.77	1,173	\$33.03
East Bay Township	\$25.90	4,488	\$3.90	1,416	\$25.95
East Jordan, City of	\$10.00	0	\$8.98	1,041	\$50.43
Elberta, Village of	\$21.95	0	\$6.58	270	\$51.56
Elk Rapids, Village of	\$38.46	1,000	\$4.58	1,540	\$54.49
Ellsworth, Village of	\$20.00	0	\$3.50	210	\$35.75
Empire, Village of	\$15.56	0	\$2.30	390	\$25.91
Ewart, City of	\$6.50	0	\$4.68	546	\$27.56
Filer Township	\$6.01	0	\$3.19	421	\$20.36
Frankfort, City of	\$11.60	1,000	\$2.58	866	\$20.63
Fruitport Charter Township	\$4.92	333	\$4.24	4,300	\$22.58
Garfield Township	\$11.50	3,456	\$2.41	3,650	\$14.01
Gaylord, City of	\$8.25	0	\$1.22	1,800	\$13.72
Grand Traverse County DPW	\$23.36	4,488	\$31.23	1,900	\$23.73
Grayling, City of	\$3.11	0	\$3.67	865	\$19.62
Haring Township	\$14.57	0	\$4.50	365	\$34.82

*Sorted by Community Name*

COMMUNITY	MONTHLY READY- TO-SERVE CHARGE	READY- TO-SERVE INCLUDED USE (GAL.)	CONSUMPTION CHARGE PER 1,000 GAL.	APPROX. NO. OF CUSTOMERS	MONTHLY BILL (BASED ON 4,500 GAL USAGE)
Hillman, Village of	\$14.50	3,333	\$2.00	313	\$16.83
Kalkaska, Village of	\$13.77	0	\$1.63	935	\$21.11
Lake City, City of	\$23.00	0	\$3.27	502	\$37.72
Little Traverse Township	\$18.67	0	\$0.00	500	\$18.67
Ludington, City of	\$3.25	0	\$2.87	3,607	\$16.18
Mackinaw City, Village of	\$10.28	0	\$5.77	650	\$36.25
Manistee, City of	\$4.60	0	\$3.25	3,450	\$19.23
Manistique, City of	\$30.47	0	\$10.15	1,500	\$76.15
Marion, Village of	\$13.33	0	\$3.25	403	\$27.96
Mesick, Village of	\$20.58	0	\$1.50	unknown	\$27.33
Ogemaw Township	\$4.80	0	\$6.00	unknown	\$31.80
Onaway, City of	\$25.38	0	\$9.66	513	\$68.85
Petoskey, City of	\$16.67	0	\$2.55	3,400	\$28.16
Rogers City, City of	\$18.22	0	\$2.01	1,492	\$27.24
Roscommon, Village of	\$12.67	2,000	\$6.33	556	\$28.50
Superior Township (Brimley)	\$32.00	3,740	\$3.16	368	\$34.40
Suttons Bay, Village of	\$9.58	0	\$2.95	495	\$22.86
Tawas City, City of	\$11.00	0	\$5.47	972	\$35.62
Traverse City, City of	\$15.00	4,488	\$2.54	7,400	\$15.03
Briley Township	\$25.00	5,000	\$3.33	182	\$25.00
West Branch, City of	\$9.95	0	\$5.23	1,149	\$33.49



*Sorted by Number of Customers*

COMMUNITY	MONTHLY READY- TO-SERVE CHARGE	READY- TO-SERVE INCLUDED USE (GAL.)	CONSUMPTION CHARGE PER 1,000 GAL.	APPROX. NO. OF CUSTOMERS	MONTHLY BILL (BASED ON 4,500 GAL USAGE)
Mesick, Village of	\$20.58	0	\$1.50	unknown	\$27.33
Ogemaw Township	\$4.80	0	\$6.00	unknown	\$31.80
Briley Township	\$25.00	5,000	\$3.33	182	\$25.00
Bear Lake, Village of	\$40.00	0	\$0.00	200	\$40.00
Ellsworth, Village of	\$20.00	0	\$3.50	210	\$35.75
Buckley, Village of	\$22.50	0	\$3.50	237	\$38.25
Big Creek/ Mentor Utility Authority	\$10.00	0	\$2.75	250	\$22.38
Elberta, Village of	\$21.95	0	\$6.58	270	\$51.56
Hillman, Village of	\$14.50	3,333	\$2.00	313	\$16.83
Haring Township	\$14.57	0	\$4.50	365	\$34.82
Beulah, Village of	\$31.43	333	\$8.80	367	\$68.09
Superior Township (Brimley)	\$32.00	3,740	\$3.16	368	\$34.40
Empire, Village of	\$15.56	0	\$2.30	390	\$25.91
Baldwin Township	\$16.05	0	\$7.00	400	\$47.55
Baldwin, Village of	\$46.39	0	\$1.16	400	\$51.61
Marion, Village of	\$13.33	0	\$3.25	403	\$27.96
Filer Township	\$6.01	0	\$3.19	421	\$20.36
Suttons Bay, Village of	\$9.58	0	\$2.95	495	\$22.86
Little Traverse Township	\$18.67	0	\$0.00	500	\$18.67
Lake City, City of	\$23.00	0	\$3.27	502	\$37.72
Onaway, City of	\$25.38	0	\$9.66	513	\$68.85
Evart, City of	\$6.50	0	\$4.68	546	\$27.56
Roscommon, Village of	\$12.67	2,000	\$6.33	556	\$28.50
Mackinaw City, Village of	\$10.28	0	\$5.77	650	\$36.25
Grayling, City of	\$3.11	0	\$3.67	865	\$19.62
Frankfort, City of	\$11.60	1,000	\$2.58	866	\$20.63
Kalkaska, Village of	\$13.77	0	\$1.63	935	\$21.11

*Sorted by Number of Customers*

COMMUNITY	MONTHLY READY- TO-SERVE CHARGE	READY- TO-SERVE INCLUDED USE (GAL.)	CONSUMPTION CHARGE PER 1,000 GAL.	APPROX. NO. OF CUSTOMERS	MONTHLY BILL (BASED ON 4,500 GAL USAGE)
Tawas City, City of	\$11.00	0	\$5.47	972	\$35.62
East Jordan, City of	\$10.00	0	\$8.98	1,041	\$50.43
West Branch, City of	\$9.95	0	\$5.23	1,149	\$33.49
Clare, City of	\$16.06	0	\$3.77	1,173	\$33.03
Blair Township	\$21.25	0	\$3.20	1,300	\$35.65
East Bay Township	\$25.90	4,488	\$3.90	1,416	\$25.95
Rogers City, City of	\$18.22	0	\$2.01	1,492	\$27.24
Manistique, City of	\$30.47	0	\$10.15	1,500	\$76.15
Elk Rapids, Village of	\$38.46	1,000	\$4.58	1,540	\$54.49
Boyne City, City of	\$10.92	0	\$2.86	1,600	\$23.79
Gaylord, City of	\$8.25	0	\$1.22	1,800	\$13.72
Grand Traverse County DPW	\$23.36	4,488	\$31.23	1,900	\$23.73
Charlevoix, City of	\$28.00	2,000	\$4.35	3,000	\$38.88
Petoskey, City of	\$16.67	0	\$2.55	3,400	\$28.16
Manistee, City of	\$4.60	0	\$3.25	3,450	\$19.23
Cadillac, City of	\$7.78	0	\$2.18	3,550	\$17.59
Ludington, City of	\$3.25	0	\$2.87	3,607	\$16.18
Garfield Township	\$11.50	3,456	\$2.41	3,650	\$14.01
Fuitport Charter Township	\$4.92	333	\$4.24	4,300	\$22.58
Traverse City, City of	\$15.00	4,488	\$2.54	7,400	\$15.03

## *Sorted by Typical Monthly Bill*

Typical Monthly Bill is calculated assuming usage of 4,500 gallons per month. Some communities may charge a separate debt recovery fee or other fees.

COMMUNITY	MONTHLY READY- TO-SERVE CHARGE	READY- TO-SERVE INCLUDED USE (GAL.)	CONSUMPTION CHARGE PER 1,000 GAL.	APPROX. NO. OF CUSTOMERS	MONTHLY BILL (BASED ON 4,500 GAL USAGE)
Gaylord, City of	\$8.25	0	\$1.22	1,800	\$13.72
Garfield Township	\$11.50	3,456	\$2.41	3,650	\$14.01
Traverse City, City of	\$15.00	4,488	\$2.54	7,400	\$15.03
Ludington, City of	\$3.25	0	\$2.87	3,607	\$16.18
Hillman, Village of	\$14.50	3,333	\$2.00	313	\$16.83
Cadillac, City of	\$7.78	0	\$2.18	3,550	\$17.59
Little Traverse Township	\$18.67	0	\$0.00	500	\$18.67
Manistee, City of	\$4.60	0	\$3.25	3,450	\$19.23
Grayling, City of	\$3.11	0	\$3.67	865	\$19.62
Filer Township	\$6.01	0	\$3.19	421	\$20.36
Frankfort, City of	\$11.60	1,000	\$2.58	866	\$20.63
Kalkaska, Village of	\$13.77	0	\$1.63	935	\$21.11
Big Creek/ Mentor Utility Authority	\$10.00	0	\$2.75	250	\$22.38
Fuitport Charter Township	\$4.92	333	\$4.24	4,300	\$22.58
Suttons Bay, Village of	\$9.58	0	\$2.95	495	\$22.86
Grand Traverse County DPW	\$23.36	4,488	\$31.23	1,900	\$23.73
Boyne City, City of	\$10.92	0	\$2.86	1,600	\$23.79
Briley Township	\$25.00	5,000	\$3.33	182	\$25.00
Empire, Village of	\$15.56	0	\$2.30	390	\$25.91
East Bay Township	\$25.90	4,488	\$3.90	1,416	\$25.95
Rogers City, City of	\$18.22	0	\$2.01	1,492	\$27.24
Mesick, Village of	\$20.58	0	\$1.50	unknown	\$27.33
Ewart, City of	\$6.50	0	\$4.68	546	\$27.56
Marion, Village of	\$13.33	0	\$3.25	403	\$27.96
Petoskey, City of	\$16.67	0	\$2.55	3,400	\$28.16
Roscommon, Village of	\$12.67	2,000	\$6.33	556	\$28.50



## *Sorted by Typical Monthly Bill*

Typical Monthly Bill is calculated assuming usage of 4,500 gallons per month. Some communities may charge a separate debt recovery fee or other fees.

<b>COMMUNITY</b>	<b>MONTHLY READY- TO-SERVE CHARGE</b>	<b>READY- TO-SERVE INCLUDED USE (GAL.)</b>	<b>CONSUMPTION CHARGE PER 1,000 GAL.</b>	<b>APPROX. NO. OF CUSTOMERS</b>	<b>MONTHLY BILL (BASED ON 4,500 GAL USAGE)</b>
Ogemaw Township	\$4.80	0	\$6.00	unknown	<b>\$31.80</b>
Clare, City of	\$16.06	0	\$3.77	1,173	<b>\$33.03</b>
West Branch, City of	\$9.95	0	\$5.23	1,149	<b>\$33.49</b>
Superior Township (Brimley)	\$32.00	3,740	\$3.16	368	<b>\$34.40</b>
Haring Township	\$14.57	0	\$4.50	365	<b>\$34.82</b>
Tawas City, City of	\$11.00	0	\$5.47	972	<b>\$35.62</b>
Blair Township	\$21.25	0	\$3.20	1,300	<b>\$35.65</b>
Ellsworth, Village of	\$20.00	0	\$3.50	210	<b>\$35.75</b>
Mackinaw City, Village of	\$10.28	0	\$5.77	650	<b>\$36.25</b>
Lake City, City of	\$23.00	0	\$3.27	502	<b>\$37.72</b>
Buckley, Village of	\$22.50	0	\$3.50	237	<b>\$38.25</b>
Charlevoix, City of	\$28.00	2,000	\$4.35	3,000	<b>\$38.88</b>
Bear Lake, Village of	\$40.00	0	\$0.00	200	<b>\$40.00</b>
Baldwin Township	\$16.05	0	\$7.00	400	<b>\$47.55</b>
East Jordan, City of	\$10.00	0	\$8.98	1,041	<b>\$50.43</b>
Elberta, Village of	\$21.95	0	\$6.58	270	<b>\$51.56</b>
Baldwin, Village of	\$46.39	0	\$1.16	400	<b>\$51.61</b>
Elk Rapids, Village of	\$38.46	1,000	\$4.58	1,540	<b>\$54.49</b>
Beulah, Village of	\$31.43	333	\$8.80	367	<b>\$68.09</b>
Onaway, City of	\$25.38	0	\$9.66	513	<b>\$68.85</b>
Manistique, City of	\$30.47	0	\$10.15	1,500	<b>\$76.15</b>

*Sorted by Community Name*

COMMUNITY	MONTHLY READY- TO-SERVE CHARGE	READY- TO-SERVE INCLUDED USE (GAL.)	CONSUMPTION CHARGE PER 1,000 GAL.	APPROX. NO. OF CUSTOMERS	MONTHLY BILL (BASED ON 4,500 GAL USAGE)
Acme Township	\$30.00	0	\$0.00	992	\$30.00
Alanson, Village of	\$41.00	0	\$0.00	300	\$41.00
Baldwin Township	\$44.78	0	\$6.01	80	\$71.83
Baldwin, Village of	\$23.45	1,000	\$6.26	387	\$45.36
Barryton, Village of	\$27.85	0	\$0.00	211	\$27.85
Bear Creek Township	\$38.33	0	\$0.00	1,060	\$38.33
Beulah, Village of	\$14.08	333	\$3.71	367	\$29.54
Big Creek/ Mentor Utility Authority	\$36.75	0	\$0.00	580	\$36.75
Blair Township	\$26.10	0	\$2.60	200	\$37.80
Boyne City, City of	\$11.00	0	\$4.73	1,600	\$32.29
Cadillac, City of	\$11.31	0	\$3.52	4,200	\$27.13
Charlevoix, City of	\$39.00	1,000	\$6.55	3,000	\$61.93
Clare, City of	\$23.54	0	\$5.01	1,236	\$46.09
East Jordan, City of	\$11.67	0	\$10.05	871	\$56.91
Elberta, Village of	\$31.35	0	\$5.70	270	\$57.00
Elk Rapids, Village of	\$36.68	1,000	\$7.34	1,500	\$62.37
Evart, City of	\$14.00	0	\$9.28	546	\$55.76
Filer Township	\$13.33	0	\$14.27	42	\$77.55
Frankfort, City of	\$28.33	1,000	\$6.23	866	\$50.14
Fuitport Charter Township	\$4.74	333	\$3.91	600	\$21.03
Garfield Township	\$20.90	0	\$0.00	3,650	\$20.90
Gaylord, City of	\$8.15	0	\$4.34	1,800	\$27.70
Grand Traverse County DPW	\$26.42	0	\$0.00	1,890	\$26.42
Grayling, City of	\$3.11	0	\$4.64	750	\$23.99
Haring Township	\$60.00	0	\$3.69	200	\$76.61
Hillman, Village of	\$18.00	0	\$0.00	295	\$18.00
Honor, Village of	\$42.00	0	\$0.00	270	\$42.00

*Sorted by Community Name*

COMMUNITY	MONTHLY READY- TO-SERVE CHARGE	READY- TO-SERVE INCLUDED USE (GAL.)	CONSUMPTION CHARGE PER 1,000 GAL.	APPROX. NO. OF CUSTOMERS	MONTHLY BILL (BASED ON 4,500 GAL USAGE)
Houghton Lake Sewer Authority	\$22.00	0	\$0.00	8,000	\$22.00
Kalkaska, Village of	\$30.00	0	\$3.15	865	\$44.18
Lake City, City of	\$19.50	0	\$0.00	1,005	\$19.50
Leland Township	\$2.50	0	\$17.32	550	\$80.44
Little Traverse Township	\$12.91	0	\$0.00	1,000	\$12.91
Littlefield Township	\$38.72	0	\$0.00	590	\$38.72
Ludington, City of	\$4.68	0	\$4.16	3,470	\$23.39
Mackinaw City, Village of	\$11.93	0	\$5.94	650	\$38.66
Manistee, City of	\$13.24	0	\$8.90	3,450	\$53.29
Manistique, City of	\$30.82	0	\$10.88	1,500	\$79.78
Marion, Village of	\$14.25	3,333	\$42.74	403	\$64.11
Mesick, Village of	\$29.00	0	\$0.00	unknown	\$29.00
Onaway, City of	\$30.19	5,000	\$46.59	500	\$30.19
Petoskey, City of	\$40.99	0	\$4.93	3,150	\$63.19
Rogers City, City of	\$27.53	0	\$4.01	1,512	\$45.58
Roscommon, Village of	\$17.80	0	\$4.18	467	\$36.61
Superior Township (Brimley)	\$15.51	3,740	\$1.94	368	\$16.98
Suttons Bay, Village of	\$17.00	0	\$6.63	485	\$46.84
Tawas City, City of	\$23.36	0	\$5.20	956	\$46.76
Traverse City, City of	\$40.00	4,488	\$6.15	7,400	\$40.07
West Branch, City of	\$4.80	0	\$4.98	1,149	\$27.21



*Sorted by Number of Customers*

COMMUNITY	MONTHLY READY- TO-SERVE CHARGE	READY- TO-SERVE INCLUDED USE (GAL.)	CONSUMPTION CHARGE PER 1,000 GAL.	APPROX. NO. OF CUSTOMERS	MONTHLY BILL (BASED ON 4,500 GAL USAGE)
Mesick, Village of	\$29.00	0	\$0.00	unknown	\$29.00
Filer Township	\$13.33	0	\$14.27	42	\$77.55
Baldwin Township	\$44.78	0	\$6.01	80	\$71.83
Blair Township	\$26.10	0	\$2.60	200	\$37.80
Haring Township	\$60.00	0	\$3.69	200	\$76.61
Barryton, Village of	\$27.85	0	\$0.00	211	\$27.85
Elberta, Village of	\$31.35	0	\$5.70	270	\$57.00
Honor, Village of	\$42.00	0	\$0.00	270	\$42.00
Hillman, Village of	\$18.00	0	\$0.00	295	\$18.00
Alanson, Village of	\$41.00	0	\$0.00	300	\$41.00
Beulah, Village of	\$14.08	333	\$3.71	367	\$29.54
Superior Township (Brimley)	\$15.51	3,740	\$1.94	368	\$16.98
Baldwin, Village of	\$23.45	1,000	\$6.26	387	\$45.36
Marion, Village of	\$14.25	3,333	\$42.74	403	\$64.11
Roscommon, Village of	\$17.80	0	\$4.18	467	\$36.61
Suttons Bay, Village of	\$17.00	0	\$6.63	485	\$46.84
Onaway, City of	\$30.19	5,000	\$46.59	500	\$30.19
Ewart, City of	\$14.00	0	\$9.28	546	\$55.76
Leland Township	\$2.50	0	\$17.32	550	\$80.44
Big Creek/ Mentor Utility Authority	\$36.75	0	\$0.00	580	\$36.75
Littlefield Township	\$38.72	0	\$0.00	590	\$38.72
Fuitport Charter Township	\$4.74	333	\$3.91	600	\$21.03
Mackinaw City, Village of	\$11.93	0	\$5.94	650	\$38.66
Grayling, City of	\$3.11	0	\$4.64	750	\$23.99
Kalkaska, Village of	\$30.00	0	\$3.15	865	\$44.18
Frankfort, City of	\$28.33	1,000	\$6.23	866	\$50.14
East Jordan, City of	\$11.67	0	\$10.05	871	\$56.91

*Sorted by Number of Customers*

COMMUNITY	MONTHLY READY- TO-SERVE CHARGE	READY- TO-SERVE INCLUDED USE (GAL.)	CONSUMPTION CHARGE PER 1,000 GAL.	APPROX. NO. OF CUSTOMERS	MONTHLY BILL (BASED ON 4,500 GAL USAGE)
Tawas City, City of	\$23.36	0	\$5.20	956	\$46.76
Acme Township	\$30.00	0	\$0.00	992	\$30.00
Little Traverse Township	\$12.91	0	\$0.00	1,000	\$12.91
Lake City, City of	\$19.50	0	\$0.00	1,005	\$19.50
Bear Creek Township	\$38.33	0	\$0.00	1,060	\$38.33
West Branch, City of	\$4.80	0	\$4.98	1,149	\$27.21
Clare, City of	\$23.54	0	\$5.01	1,236	\$46.09
Elk Rapids, Village of	\$36.68	1,000	\$7.34	1,500	\$62.37
Manistique, City of	\$30.82	0	\$10.88	1,500	\$79.78
Rogers City, City of	\$27.53	0	\$4.01	1,512	\$45.58
Boyne City, City of	\$11.00	0	\$4.73	1,600	\$32.29
Gaylord, City of	\$8.15	0	\$4.34	1,800	\$27.70
Grand Traverse County DPW	\$26.42	0	\$0.00	1,890	\$26.42
Charlevoix, City of	\$39.00	1,000	\$6.55	3,000	\$61.93
Petoskey, City of	\$40.99	0	\$4.93	3,150	\$63.19
Manistee, City of	\$13.24	0	\$8.90	3,450	\$53.29
Ludington, City of	\$4.68	0	\$4.16	3,470	\$23.39
Garfield Township	\$20.90	0	\$0.00	3,650	\$20.90
Cadillac, City of	\$11.31	0	\$3.52	4,200	\$27.13
Traverse City, City of	\$40.00	4,488	\$6.15	7,400	\$40.07
Houghton Lake Sewer Authority	\$22.00	0	\$0.00	8,000	\$22.00

*Sorted by Typical Monthly Bill*

Typical Monthly Bill is calculated assuming usage of 4,500 gallons per month. Some communities may charge a separate debt recovery fee or other fees.

COMMUNITY	MONTHLY READY- TO-SERVE CHARGE	READY- TO-SERVE INCLUDED USE (GAL.)	CONSUMPTION CHARGE PER 1,000 GAL.	APPROX. NO. OF CUSTOMERS	MONTHLY BILL (BASED ON 4,500 GAL USAGE)
Little Traverse Township	\$12.91	0	\$0.00	1,000	\$12.91
Superior Township (Brimley)	\$15.51	3,740	\$1.94	368	\$16.98
Hillman, Village of	\$18.00	0	\$0.00	295	\$18.00
Lake City, City of	\$19.50	0	\$0.00	1,005	\$19.50
Garfield Township	\$20.90	0	\$0.00	3,650	\$20.90
Fuitport Charter Township	\$4.74	333	\$3.91	600	\$21.03
Houghton Lake Sewer Authority	\$22.00	0	\$0.00	8,000	\$22.00
Ludington, City of	\$4.68	0	\$4.16	3,470	\$23.39
Grayling, City of	\$3.11	0	\$4.64	750	\$23.99
Grand Traverse County DPW	\$26.42	0	\$0.00	1,890	\$26.42
Cadillac, City of	\$11.31	0	\$3.52	4,200	\$27.13
West Branch, City of	\$4.80	0	\$4.98	1,149	\$27.21
Gaylord, City of	\$8.15	0	\$4.34	1,800	\$27.70
Barryton, Village of	\$27.85	0	\$0.00	211	\$27.85
Mesick, Village of	\$29.00	0	\$0.00	unknown	\$29.00
Beulah, Village of	\$14.08	333	\$3.71	367	\$29.54
Acme Township	\$30.00	0	\$0.00	992	\$30.00
Onaway, City of	\$30.19	5,000	\$46.59	500	\$30.19
Boyne City, City of	\$11.00	0	\$4.73	1,600	\$32.29
Roscommon, Village of	\$17.80	0	\$4.18	467	\$36.61
Big Creek/ Mentor Utility Authority	\$36.75	0	\$0.00	580	\$36.75
Blair Township	\$26.10	0	\$2.60	200	\$37.80
Bear Creek Township	\$38.33	0	\$0.00	1,060	\$38.33
Mackinaw City, Village of	\$11.93	0	\$5.94	650	\$38.66
Littlefield Township	\$38.72	0	\$0.00	590	\$38.72
Traverse City, City of	\$40.00	4,488	\$6.15	7,400	\$40.07



*Sorted by Typical Monthly Bill*

Typical Monthly Bill is calculated assuming usage of 4,500 gallons per month. Some communities may charge a separate debt recovery fee or other fees.

COMMUNITY	MONTHLY READY- TO-SERVE CHARGE	READY- TO-SERVE INCLUDED USE (GAL.)	CONSUMPTION CHARGE PER 1,000 GAL.	APPROX. NO. OF CUSTOMERS	MONTHLY BILL (BASED ON 4,500 GAL USAGE)
Alanson, Village of	\$41.00	0	\$0.00	300	\$41.00
Honor, Village of	\$42.00	0	\$0.00	270	\$42.00
Kalkaska, Village of	\$30.00	0	\$3.15	865	\$44.18
Baldwin, Village of	\$23.45	1,000	\$6.26	387	\$45.36
Rogers City, City of	\$27.53	0	\$4.01	1,512	\$45.58
Clare, City of	\$23.54	0	\$5.01	1,236	\$46.09
Tawas City, City of	\$23.36	0	\$5.20	956	\$46.76
Suttons Bay, Village of	\$17.00	0	\$6.63	485	\$46.84
Frankfort, City of	\$28.33	1,000	\$6.23	866	\$50.14
Manistee, City of	\$13.24	0	\$8.90	3,450	\$53.29
Ewart, City of	\$14.00	0	\$9.28	546	\$55.76
East Jordan, City of	\$11.67	0	\$10.05	871	\$56.91
Elberta, Village of	\$31.35	0	\$5.70	270	\$57.00
Charlevoix, City of	\$39.00	1,000	\$6.55	3,000	\$61.93
Elk Rapids, Village of	\$36.68	1,000	\$7.34	1,500	\$62.37
Petoskey, City of	\$40.99	0	\$4.93	3,150	\$63.19
Marion, Village of	\$14.25	3,333	\$42.74	403	\$64.11
Baldwin Township	\$44.78	0	\$6.01	80	\$71.83
Haring Township	\$60.00	0	\$3.69	200	\$76.61
Filer Township	\$13.33	0	\$14.27	42	\$77.55
Manistique, City of	\$30.82	0	\$10.88	1,500	\$79.78
Leland Township	\$2.50	0	\$17.32	550	\$80.44

## Glossary

The following are definitions of the terms used throughout this summary.

### **READY TO SERVE CHARGE**

This is the minimum bill that a single family water or sewer customer would receive regardless of usage. For communities who do not bill on a monthly cycle, their ready to serve charges have been adjusted to a per month basis. In many cases, the ready to serve charge includes a volume of water or wastewater. Some communities refer to the ready to serve charge as an “Availability Charge” or “Minimum Bill.”

### **INCLUDED USE**

The volume of water or wastewater use that the customer receives along with the ready to serve charge.

### **CONSUMPTION OR USAGE CHARGE**

The charge for additional water or wastewater usage in excess of the volume included in the ready to serve charge. The tables show this rate in dollars per 1000 gallons. Some municipalities bill in cubic feet and their rates have been adjusted to a 1000 gallon equivalent. Some communities refer to the consumption or usage charge as a “Commodity Charge.”

### **REU**

Residential Equivalent Unit. This is a term used by some municipalities for billing sewer and water that gives non-residential customers a rating for their anticipated water usage relative to a typical residence. Some municipalities use “EUF” (Equivalent Unit Factor), “EDU” (Equivalent Dwelling Unit), or “Benefit” rather than REU.

### **OUTSTANDING DEBT**

A debt owed by the municipality for the construction of water and sewer system.

## Services

**CIVIL ENGINEERING**

**ENVIRONMENTAL SERVICES**

**SURVEYING**

**CONSTRUCTION SERVICES**

**GEOTECHNICAL ENGINEERING**

**DRILLING**

**LANDSCAPE ARCHITECTURE**

## Company Overview

**GOSLING CZUBAK  
ENGINEERING SCIENCES, INC.  
1280 BUSINESS PARK DRIVE  
TRAVERSE CITY, MICHIGAN 49686**

Gosling Czubak is a professional consulting firm providing engineering, surveying, environmental, landscape architecture, geotechnical and construction testing services to a large variety of clients. Located in Traverse City, the firm has served public and private clients throughout Michigan and the Midwest since 1957.

We currently employ a staff of about 50 experienced professional and technical people.

To complement our consulting services, Gosling Czubak has a fully equipped materials testing laboratory (soils, asphalt, and concrete), construction testing field equipment, drill rigs, and certified engineering technicians trained in construction materials testing procedures and specifications. Our survey crews are equipped to provide the most technologically advanced surveying available.

Gosling Czubak looks forward to providing you with the personal attention, enthusiasm, and professional services needed to support the success of your project.

## Contact

Ph: (800) 968-1062

Ph: (231) 946-9191

Fax: (231) 941-4603

[www.goslingczubak.com](http://www.goslingczubak.com)

[info@goslingczubak.com](mailto:info@goslingczubak.com)



**CIVIL ENGINEERING & LANDSCAPE ARCHITECTURE**

We provide a variety of services to help municipalities, commercial and residential developers, industrial clients, and other professional consultants build their projects. These clients use our services to plan community improvements, evaluate existing infrastructure facilities, secure funding to make projects affordable, and design developments that are easily maintained and operated.



**CONSTRUCTION SERVICES**

Our experience includes some of the largest and most complicated projects constructed in northern Michigan. Technicians are certified in concrete, aggregates, and bituminous testing. We have a fully equipped materials testing laboratory and our equipment is regularly calibrated.



**LAND SURVEYING**

Using innovative methods and equipment, our survey department serves a variety of clients including commercial and residential development, oil and gas, telecommunications, industrial, and utilities. Throughout Michigan, we provide precise surveys for land, development, spatial, geodetic, control, construction, MDOT, and hydrographic projects. Our multiple survey crews utilize the most technically advanced equipment. Each crew is supplied with total station survey equipment, real-time and static global positioning systems, and tracked and amphibious vehicles for accessing difficult terrains.



**ENVIRONMENTAL, GEOTECHNICAL & DRILLING**

Gosling Czubak maintains one of the largest environmental staffs in northern Michigan. Our environmental service professionals include registered engineers, certified geologists, certified hazardous materials managers, and trained field technicians. Our professionals are prepared to meet environmental needs for the oil and gas industry, manufacturing, landfills, mining operations, municipal works, or underground storage tanks.

Additionally, we offer geotechnical services, including soils investigations for foundations, retaining walls, soil densification, dewatering, and slope stability projects, and recommend the appropriate construction methods where necessary.

Our drill rig provides a full range of environmental and geotechnical drilling services. By having drilling capabilities in-house, we can maximize rig scheduling flexibility to accomplish our clients' projects quickly.